

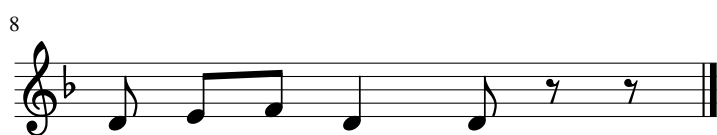
Kalanta Prōtochronias



Ar-chi-mē-nia__ ki ar - chi - chro - nia psi-lē mou de - ntro - li - va - nia



kiar - chē kiar-chē ka - lōs mas chro - nos ek - klē - sia ek - klē - sia



me t'a - gio thro - nos.

Kalanta Prōtochronias

Archimēnia ki archichronia,
psilē mou dentrolivania,
ki archē ki archē kalōs mas chronos,
ekklēsia ekklēsia me t' agio thronos.

Agios Vasilēs erchetai,
archontes ton katechete,
apo apo tēn Kaisareia sy' sai archo,
sy' sai archontissa kyria.

Vasta eikona kai charti,
zaxarokantio zymōtē,
charti, charti kai kalamari,
des kai me, des kai me to palikari.

To kalamari egraphie,
tē moira tou tēn elege,
kai to, kai to charti omilei
Agie mou, Agie mou kale Vasilē

Katse na phas, katse na pieis,
an m' agapas na mou to eipeis
katse katse na tragoudēseis
kai na mas kai na mas kalokardiseis.